

2018 STEM Exploration Camp

July 16 – 21, 2018 v3

Build the Next Generation of STEM Leaders

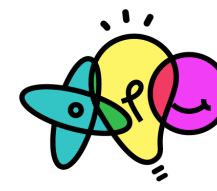
Day 1 (Monday, July 16) – Welcome to Marvel Universe			Details (Leads: Jeremiah, Shalonda & Adamaka)
Setup	Unique: Follows the pathways model of getting students involved in field works and hands-on experience.		
8:00am – 9:00am (30min)	Check-In & Breakfast	ALL	Check-In & Breakfast
9:00am – 9:10am (10min)	Welcome & Introductions	Adamaka	Welcome & Introductions (in cafeteria area)
9:10am – 9:15am (5min)	STEM Agenda Overview	Shalonda/Jeremiah	STEM Agenda Overview (for the day)
9:15am – 9:30am (15min)	Ice Breaker(s)	Shalonda	Ice Breaker: Bingo
9:30 am-9:40am (10min)	Black Panther Movie Lead: Jeremiah		Show the girls the last 10 minutes of the Black Panther movie Volunteers- Make sure girls are paying attention to the clip
9:40am – 9:45am (5min)	Transition to Workshop	Groups/All	Make sure everyone knows where to go
	GROUP 1 (AGES 7-11)	GROUP 2 (AGES 12-17)	Details
9:45 am-9:50am (5min)	Video Introduction of the Marvel Mission Lead: Jeremiah/Shalonda		Read the client requirements for the mission overview. Project is to design multi-purpose youth center. Jeremiah - Read summary of client mission will be read for day

2018 STEM Exploration Camp

July 16 – 21, 2018 v3

Build the Next Generation of STEM Leaders

			1. This is high level of the week. Note: Jeremiah Will give lecture to one large group and then split up
9:50 am- 10 am (10min)	Meet your Marvel Client! Lead: Shalonda & Alanna		Randomly pass out different Marvel characters to each girl (girls will be grouped based on the character they have. Characters will be on cards with images and short bios).
10:10-10:15 (15min)	Split girls into groups by age/character: Shalonda		Split the girls into two cohorts (ages 7-10 and 11-17). Separate into groups within cohorts of groups of 3
	GROUP 1 (AGES 7-11)	GROUP 2 (AGES 12-17)	Details
10:15-10:30 (15min)	Intro to Multi Purpose Room Design Lecture lead by: TBD (Andrew/ CAL Engineer Student)	Intro to Multi Purpose Room Design Lecture lead by: Jeremiah	Lecture on what a multi-purpose collaborative space Volunteers to split into 2 age groups and support leads
10:30 am- 10:40 (10min)	Break Lead by: Alanna		Bathroom, water, snacks
10:40-11:00 (20min)	Research Lead: Andrew	Research Lead: Jeremiah	Provide a location in Oakland to build the center Volunteers to support leads
11:00- 12:00 (1hr)	Start Vision Board Lead by:TBD	Start Vision Board Lead by Jeremiah:	Pass out project requirements, and let girls start the vision board Volunteers to support leads
12:00 pm- 12:45	Lunch- Lead by Alanna and MFSC		
12:50-1:50 (1hr)	Finish Vision Board	Finish Vision Board	Support the girls to have a complete vision board Volunteers help girls clean as they create



2018 STEM Exploration Camp

July 16 – 21, 2018 v3

Build the Next Generation of STEM Leaders

1:50-2:50 (1hr)	Start floor plan layout (bubble diagram) lecture (30 min) Lead by: TBD (CAL Engineer Student)	Start floor plan layout (bubble diagram) lecture (30 min) Lead by: Jeremiah	Girls will learn how to create a bubble diagram An exemplar needs to be created prior to the day Volunteers to support with what goes in the diagram
2:50-3:00pm (10min)	Close Lead: Adamaka		Shout Outs, Announcements, close Marvel Fun Facts (3)

Day 2 (Tuesday, July 17) - Introduction to Model Making			Details (Leads: Adamaka & Shalonda)
8:00am – 9:00am (1hr)	Check-In & Breakfast All		<ul style="list-style-type: none"> • Check-In & Breakfast • Everyone to setup laptops in classroom and connect to the • Staff and volunteers float around and help with the girls
9:00am – 9:10am (10 min)	Ice Breakers & framing of day Lead: Shalonda/Adamaka		<ul style="list-style-type: none"> • Lead the girls in recap Day 1 and can win prizes
	GROUP 1 (AGES 7-11)	GROUP 2 (AGES 12-17)	Details
9:10 am – 10:10 am (1hr)	Powerpoint Lecture lead by: Adamaka	Tinkercad Lecture Lead: Erica Nwankwo (Autodesk)	<ul style="list-style-type: none"> • Each group will get a introduction to how to use their program (PPT or Tinkercad), and how to actually have it reflect their model. • Girls need bubble diagrams from the previous day
10:10-11:10 (1hr)	Begin to Create virtual models of your multi-purpose space using PowerPoint	Begin to Create virtual models of your multi-purpose space using Tinkercad	<ul style="list-style-type: none"> • Design the outside space-basic layout • Provide curriculum on environmental aspects and being design details • Provide overview of requirement details

2018 STEM Exploration Camp

July 16 – 21, 2018 v3

Build the Next Generation of STEM Leaders

	Lead by: Adamaka	Erica Nwankwo (Autodesk)	<ul style="list-style-type: none"> Volunteers support with how to use the programs
11:10-11:20 (10min)	Snack Break Lead By: Alanna		<ul style="list-style-type: none"> Bathroom, water, snack break Volunteers to make sure girls come back from break on time, throw away trash, etc.
11:20-12:00 (40min)	Finish Outline	Finish Outline	<ul style="list-style-type: none"> Finish designing basic outline of virtual space
12:00pm – 1:00pm (30 min)	LUNCH- Lead by Alanna and MFSC		MFSC
1:00pm – 2:50pm (1hr 50 min)	Designing the details Lead by: Shalonda & CAL Engineer Student	Designing the details Lead by: Jeremiah	<ul style="list-style-type: none"> Designing the details of each room- identifying how many rooms you will have, and adding details to each room Volunteers to support with appropriate designs based on the client need Shalonda & Alanna to support leads If students finish early, they can begin to redesign their Marvel client logo By the end of the day, the girls will need to have their virtual designs finished Shalonda & Alanna to support leads
2:50pm-3:00pm (10min)	Close Lead: Adamaka		Shout Outs, Announcements, close Marvel Fun Facts (3)

2018 STEM Exploration Camp

July 16 – 21, 2018

v3

Build the Next Generation of STEM Leaders

Day 3 (Wednesday, July 18) – Field Trip Ed Roberts Campus		Descriptions/Details (Leads:)
8:30am - 9:15am (45min)	Check in- Lead by: ALL	
9:15am - 10:00am (45min)	Catch Bus to Ed Roberts	
10:00am-12:00	Arrive at Ed Roberts/Tour	
12:00pm-12:45pm (30min)	LUNCH-Campus	
12:45-1:00 (15min)	Clean Up/Gather Girls	
1:00-1:45	Travel Back to McClymonds High School	
1:45pm-2:00pm	Debrief about the field trip	Shalonda
2:00-3:00	Research their Client/ Create New Logo/ Sketching Design Ideas	Shalonda
2:50pm-3:00pm	Close Lead: Adamaka	Shout Outs, Announcements, close



2018 STEM Exploration Camp

July 16 – 21, 2018 v3

Build the Next Generation of STEM Leaders

(10min)		Marvel Fun Facts (4)
---------	--	----------------------

Day 4 (Thursday, July 19) –Technology and Fashion		Descriptions/Details (Leads: Adamaka & Alanna)
8:00am – 9:00am	Checkin and Breakfast	<ul style="list-style-type: none"> ● Breakfast lead by: MFS ● Check in lead by a volunteer ● Setup projector in cateria
9:00am - 9:20am	Kahoot Trivia Game Lead by: Shalonda	<ul style="list-style-type: none"> ● Questions will be created based on what the girls have learned so far. ● Winner(s) of the game will when a secret prize (they have an actual volunteer to be their model for the fashion show!)
9:20am - 9:40am	Framing of the day based on the film Lead By: Gervetti/Shalonda	<ul style="list-style-type: none"> ● Show scene from Black Panther when Princess Shuri is showing Black Panther her additions to his suit. ● Play the scene ● The goal of the day is to design a design a technologically-advanced clothing item/accessory based on their clients super power ● Girls should have their superhero/shero card with them ● Girls will either need to choose a person to model their items from their group, and the group that won the triva game gets a volunteer as their model ● Let the girls know that we will end the day with a fashion show

2018 STEM Exploration Camp

July 16 – 21, 2018 v3

Build the Next Generation of STEM Leaders

		<ul style="list-style-type: none"> • Show scene from Black Panther when Princess Shuri is showing Black Panther her additions to his suit. • Play the scene
9:40am - 9:50am	Geometric Principles Lead by: Adamaka	<ul style="list-style-type: none"> • Provide a powerpoint overview of different patterns from the movie and personal items. • Girls will get a sample of a created clothing item and accessory
9:50am - 10:00am	Science and Art of Jewelry Making Lead by: Ms. Atiba	<ul style="list-style-type: none"> • Girls will have the science and art behind making jewelry
10:00-10:20	Independent Sketch Work: Lead by Shalonda	<ul style="list-style-type: none"> • Girls will have 20 min to sketch/plan out their design(s) • Girls will also need to measure their models!
10:20am - 10:30am	Gathering Materials	<ul style="list-style-type: none"> • Girls will find a partner to show their designs to and ask for feedback • Identify Material Manager (SelfeSTEM Sticker)
10:30am -10:50 am	Upcycling with a Style Lead by: Ms. Monica	<ul style="list-style-type: none"> • Girls will learn how to “upcycle” and repurpose clothing to create a new design or accessory.
10:50 am - 11:00am	Snack break Lead by: Alanna	<ul style="list-style-type: none"> • Girls can get snacks, water, etc.
11:00am -12:00am	Work on Fashion Design	<ul style="list-style-type: none"> • Create or repurpose a garment and an accessory, inspired by your client.
12:00pm – 12:30pm	LUNCH	<ul style="list-style-type: none"> • Lunch will be provided
12:30pm-3:10pm	Transition back to work spaces lead by: ALL	<ul style="list-style-type: none"> • Working session on project item
3:10pm-3:25pm	Clean Up Lead by Shalonda	<ul style="list-style-type: none"> • Girls will grab their final touch-materials, to finish working on their design.

2018 STEM Exploration Camp

July 16 – 21, 2018

v3

Build the Next Generation of STEM Leaders

3:25pm - 3:30pm	Close Lead: Adamaka	Shout Outs, Announcements, close
-----------------	---------------------	----------------------------------

Day 5 (Friday, July 20) – Marvel STEM-Fest (comic con style!)		Descriptions/Details (Leads: Shalonda & Catameron)
8:00am – 9:00am	Check-In and Breakfast	<ul style="list-style-type: none"> Self-eSTEM volunteers/board arrive at 7:45am to begin set up Volunteers to help set up for STEM Fest. Shalonda to run point on this
9:00am – 9:10am	Overview Lead by : Gervetti/Rossi	
9:10am - 11:30am	Work on Fashion Design	<ul style="list-style-type: none"> Create or repurpose a garment and an accessory, inspired by your client.
11:30am-12:00pm	Marvel World Runway!!! Lead by Shalonda Tillman hosted by Rossi	<ul style="list-style-type: none"> Groups will show off their designs to the camp Judges will be looking for: design, fit, execution, and how well it matched their clients needs! Judges are: Adamaka, Gervetti, Ms. Atiba, Alanna (Lead instructor if there is a tie) Winner gets a gift card to: TBD
12:00pm-1:00pm	LUNCH	MFS Catering
1:00pm-3:00pm	SelfeSTEM Marvel Fest	<ul style="list-style-type: none"> Snow Cone Cotton Candy Machine SuperHero Obstacle Relay (cones)

2018 STEM Exploration Camp

July 16 – 21, 2018 v3

Build the Next Generation of STEM Leaders

		<ul style="list-style-type: none"> ● Knock Out- (Val) ● Music Playing ● Jumper ● Marvel Movie-Black Panther ● Cupcake Walk ● Face Painting ● Button Maker ● Sticker Maker ● Arts and Crafts ● Large Jenga ● Water Balloon Toss ● Dance Battle ● Fish Bowl Toss ● STEM Tic-Tac-Toe ● Sack-Race ● Tug-of-War
3:00pm-3:30pm	Clean Up	

2018 STEM Exploration Camp

July 16 – 21, 2018

v3

Build the Next Generation of STEM Leaders

Day 6 (July 21) – Closeout Celebration			Descriptions/Details (Lead: Gervetti)
9:30am – 11:00am	Setup		<ul style="list-style-type: none"> ● ANTICIPATE 150 PEOPLE IN ATTENDANCE ● Victoria to do food setup ● Board: encourage parents to complete survey. Remind them of the raffle prize of Warriors tickets ● Everyone/volunteers: Setup, including decorations
11:00am – 11:10am	Welcome & Introductions	Adamaka Ajaelo & Executive Board	<p>Adamaka to welcome everyone and introduce herself, and then call up the board for them to introduce themselves.</p> <ul style="list-style-type: none"> ● Name, role with Self-eSTEM, career position, passion about STEM <p>Adamaka to provide background/history of vision & mission. Josette to assist with projector for presentation</p>
11:10am – 11:15am	2016 STEM Exploration Camp Slide Show	Adamaka Ajaelo (optional)	<p>Adamaka comments: we had a great time exploring and sparking each other's curiosity of STEM, but instead of talking about it, why don't we show you...</p>
11:15am – 11:30am	Participants Presentation of Workshop Outcomes	Alanna, Gervetti, and Shalonda	<ul style="list-style-type: none"> ● Alanna, Gervetti, and Shalonda to have participants will discuss something they learned. Identify 1-2 girls from each age group
11:30am – 11:50am	Guest Speaker: The Importance of Diversity & Inclusion in STEM	TBD	<p>Adamaka to introduce the speaker.</p> <p><u>Topic Areas:</u></p> <ul style="list-style-type: none"> ● Explain your background <ul style="list-style-type: none"> ○ Education ○ Career path and passion(s)

2018 STEM Exploration Camp

July 16 – 21, 2018 v3

Build the Next Generation of STEM Leaders

			<ul style="list-style-type: none"> • What role(s) do you play in ensuring diversity & inclusion within your company and/or within any of the STEM industry? • Key accomplishment(s) • Explain how important it is for young girls and women to participate in STEM, and how they can become future STEM leader • What has STEM done for you (personally and professionally)? • Adamaka to provide first STEM Partner award to Shraddha
11:50am – 12:30pm	Lunch	MFSC	
12:30pm – 12:55pm	Lunch Continued Certificate & Award Ceremony	Shalonda Tillman Gervetti Lockett	<ul style="list-style-type: none"> • Josette & Shalonda will call participants by ages and then names for certificate ceremony. They shall remain up at the stage until all names are called so a group picture can be taken. • Gervetti to announce first annual STEM Diva award for the participant who extremely active, engaged, and participants.
12:55pm – 1:00pm	Raffle & Close Out Remarks	Alanna Dover & Adamaka Ajaelo	<ul style="list-style-type: none"> • Alanna do raffle for parent and youth, respectively • Adamaka does close out remarks and ask parent and/or participant for remarks